

# ADDENDUM NO. 4

Date: May 23, 2017

## BASEBALL FIELD BLEACHER REPLACEMENT PROJECT SADDLEBACK COLLEGE

South Orange County Community College District

---

---

General-All project documents including contract documents, drawings, and specifications, shall remain unchanged with the exception of those elements added, revised, deleted, or clarified by this addendum.

---

---

### CONTENTS ADDENDUM ITEMS

INDEX PAGE 1

**ITEMS:**

Precise Grading Plan - Revised PAGE 2

Attachment

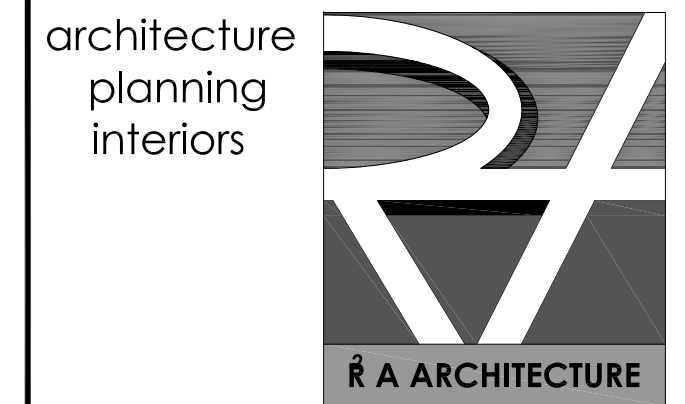
## **Precise Grading Plan - Revised**

The attached revised Precise Grading Plan is provided in lieu of the drawing in the bid document package. It was determined that the original plan was developed using two reference points that were offset resulting in an inaccurate drawing.

The Precise Grading Plan in this addendum must be used in developing cost to the project and reflected in the contractor's bid.

# PRECISE GRADING PLAN BASEBALL FIELD ADA ACCESS

2800 MARGUERITE PWY  
MISSION VIEJO, CA 92692

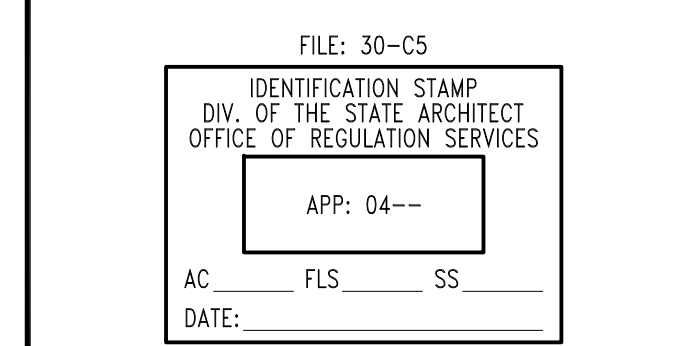


2900 Bristol St, Suite E205  
Costa Mesa, CA 92626-7909  
ph: 714.435.0380  
fx: 714.435.0383



PREPARED BY:  
**Andrew Grechuta**  
CIVIL ENGINEER ANDREW GRECHUTA, P.E.  
LAND PLANNING AND SURVEYING  
04-05-2017

DATE  
**G & G ENGINEERING, INC.**  
1251 N. MANASSERO ST., STE 402  
ANAHEIM, CA 92807  
PH: (714) 970-7220  
FAX: (714) 970-7244  
E-MAIL: INFO@MGN.COM



Division of the State Architect  
San Diego Regional Office  
16680 West Bernardo Drive  
San Diego, California 92127  
ph: 858.474.5400  
fx: 858.474.5471

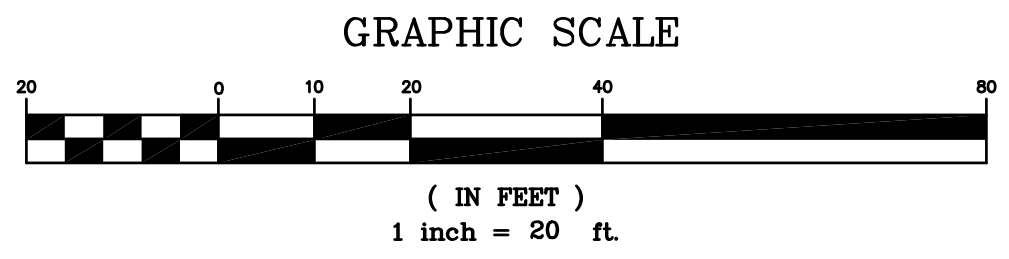
**Saddleback College  
Bleacher Replacement Project  
Baseball Field**  
2800 Marguerite Parkway  
Mission Viejo, CA 92692  
South Orange County Community College District

R'A Project Number: 15014.00  
CAD File:  
Drawn: Checked:  
Drawing Date: 04/05/2017

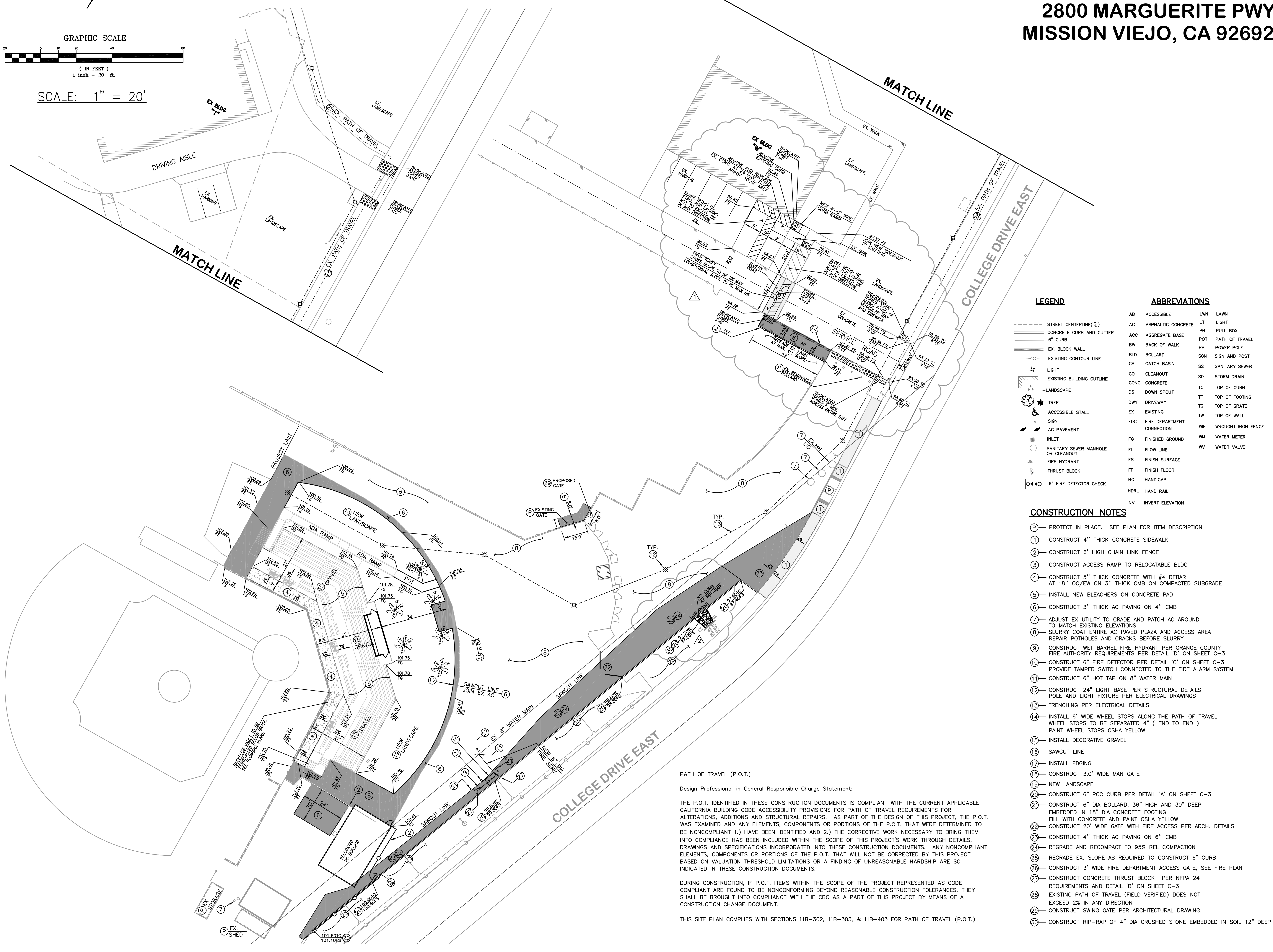
Rev:	Date:	Description:
1	05/22/17	REPLACE EX. CONC. REVISED ELEVATIONS
2	05/22/17	ADDED RIP-RAP

**GRADING PLAN**

**C-2**  
FOR PLAN REVIEW ONLY



SCALE: 1" = 20'



LEGEND	ABBREVIATIONS
--- STREET CENTERLINE (C)	AB ACCESSIBLE
--- CONCRETE CURB AND GUTTER	AC ASPHALTIC CONCRETE
--- 6" CURB	ACC AGGREGATE BASE
--- EX. BLOCK WALL	BW BACK OF WALK
--- EXISTING CONTOUR LINE	BLD BOLLARD
--- EXISTING BUILDING OUTLINE	CB CATCH BASIN
--- LANDSCAPE	CO CLEANOUT
TREE	CONC CONCRETE
ACCESSIBLE STALL	DS DOWN SPOUT
SIGN	DWY DRIVEWAY
AC PAVEMENT	EX EXISTING
INLET	FDC FIRE DEPARTMENT CONNECTION
SANITARY SEWER MANHOLE OR CLEANOUT	FG FINISHED GROUND
FIRE HYDRANT	FL FLOW LINE
THRUST BLOCK	FS FINISH SURFACE
6" FIRE DETECTOR CHECK	FF FINISH FLOOR
	HC HANDICAP
	HDRL HAND RAIL
	INV INVERT ELEVATION
	LWN LAWN
	LT LIGHT
	PB PULL BOX
	POT PATH OF TRAVEL
	PP POWER POLE
	SGN SIGN AND POST
	SS SANITARY SEWER
	SD STORM DRAIN
	TC TOP OF CURB
	TF TOP OF FOOTING
	TG TOP OF GRATE
	TW TOP OF WALL
	WM WATER METER
	WV WATER VALVE

- CONSTRUCTION NOTES**
- PROTECT IN PLACE. SEE PLAN FOR ITEM DESCRIPTION
  - CONSTRUCT 4" THICK CONCRETE SIDEWALK
  - CONSTRUCT 6" HIGH CHAIN LINK FENCE
  - CONSTRUCT ACCESS RAMP TO RELOCATABLE BLDG
  - CONSTRUCT 5" THICK CONCRETE WITH #4 REBAR AT 18" OC/EW ON 3" THICK CMB ON COMPACTED SUBGRADE
  - INSTALL NEW BLEACHERS ON CONCRETE PAD
  - CONSTRUCT 3" THICK AC PAVING ON 4" CMB
  - ADJUST EX UTILITY TO GRADE AND PATCH AC AROUND TO MATCH EXISTING ELEVATIONS
  - SLURRY COAT ENTIRE AC PAVED PLAZA AND ACCESS AREA REPAIR POTHoles AND CRACKS BEFORE SLURRY
  - CONSTRUCT WET BARREL FIRE HYDRANT PER ORANGE COUNTY FIRE AUTHORITY REQUIREMENTS PER DETAIL 'D' ON SHEET C-3
  - CONSTRUCT 6" FIRE DETECTOR PER DETAIL 'C' ON SHEET C-3 PROVIDE TAMPER SWITCH CONNECTED TO THE FIRE ALARM SYSTEM
  - CONSTRUCT 6" HOT TAP ON 8" WATER MAIN
  - CONSTRUCT 24" LIGHT BASE PER STRUCTURAL DETAILS POLE AND LIGHT FIXTURE PER ELECTRICAL DRAWINGS
  - TRENCHING PER ELECTRICAL DETAILS
  - INSTALL 6" WIDE WHEEL STOPS ALONG THE PATH OF TRAVEL WHEEL STOPS TO BE SEPARATED 4" (END TO END) PAINT WHEEL STOPS OSHA YELLOW
  - INSTALL DECORATIVE GRAVEL
  - SAWCUT LINE
  - INSTALL EDGING
  - CONSTRUCT 3.0' WIDE MAN GATE
  - NEW LANDSCAPE
  - CONSTRUCT 6" PCC CURB PER DETAIL 'A' ON SHEET C-3
  - CONSTRUCT 6" DIA BOLLARD, 36" HIGH AND 30" DEEP EMBEDDED IN 18" DIA CONCRETE FOOTING FILL WITH CONCRETE AND PAINT OSHA YELLOW
  - CONSTRUCT 20" WIDE GATE WITH FIRE ACCESS PER ARCH. DETAILS
  - CONSTRUCT 4" THICK AC PAVING ON 6" CMB
  - REGRADE AND RECOMPACT TO 95% REL COMPACTION
  - REGRADE EX. SLOPE AS REQUIRED TO CONSTRUCT 6" CURB
  - CONSTRUCT 3' WIDE FIRE DEPARTMENT ACCESS GATE, SEE FIRE PLAN
  - CONSTRUCT CONCRETE THRUST BLOCK PER NFPA 24 REQUIREMENTS AND DETAIL 'B' ON SHEET C-3
  - EXISTING PATH OF TRAVEL (FIELD VERIFIED) DOES NOT EXCEED 2% IN ANY DIRECTION
  - CONSTRUCT SWING GATE PER ARCHITECTURAL DRAWING.
  - CONSTRUCT RIP-RAP OF 4" DIA CRUSHED STONE EMBEDDED IN SOIL 12" DEEP

**PATH OF TRAVEL (P.O.T.)**  
Design Professional in General Responsible Charge Statement:  
THE P.O.T. IDENTIFIED IN THESE CONSTRUCTION DOCUMENTS IS COMPLIANT WITH THE CURRENT APPLICABLE CALIFORNIA BUILDING CODE ACCESSIBILITY PROVISIONS FOR PATH OF TRAVEL REQUIREMENTS FOR ALTERATIONS, ADDITIONS AND STRUCTURAL REPAIRS. AS PART OF THE DESIGN OF THIS PROJECT, THE P.O.T. WAS EXAMINED AND ANY ELEMENTS, COMPONENTS OR PORTIONS OF THE P.O.T. THAT WERE DETERMINED TO BE NONCOMPLIANT 1.) HAVE BEEN IDENTIFIED AND 2.) THE CORRECTIVE WORK NECESSARY TO BRING THEM INTO COMPLIANCE HAS BEEN INCLUDED WITHIN THE SCOPE OF THIS PROJECT'S WORK THROUGH DETAILS, DRAWINGS AND SPECIFICATIONS INCORPORATED INTO THESE CONSTRUCTION DOCUMENTS. ANY NONCOMPLIANT ELEMENTS, COMPONENTS OR PORTIONS OF THE P.O.T. THAT WILL NOT BE CORRECTED BY THIS PROJECT BASED ON VALUATION THRESHOLD LIMITATIONS OR A FINDING OF UNREASONABLE HARDSHIP ARE SO INDICATED IN THESE CONSTRUCTION DOCUMENTS.  
DURING CONSTRUCTION, IF P.O.T. ITEMS WITHIN THE SCOPE OF THE PROJECT REPRESENTED AS CODE COMPLIANT ARE FOUND TO BE NONCONFORMING BEYOND REASONABLE CONSTRUCTION TOLERANCES, THEY SHALL BE BROUGHT INTO COMPLIANCE WITH THE CBC AS A PART OF THIS PROJECT BY MEANS OF A CONSTRUCTION CHANGE DOCUMENT.  
THIS SITE PLAN COMPLIES WITH SECTIONS 11B-302, 11B-303, & 11B-403 FOR PATH OF TRAVEL (P.O.T.)