



**South  
Orange  
County**  
Community  
College District



**Sonya Christian  
Chancellor**

## Vision 2030: A Roadmap for CA CCs

---

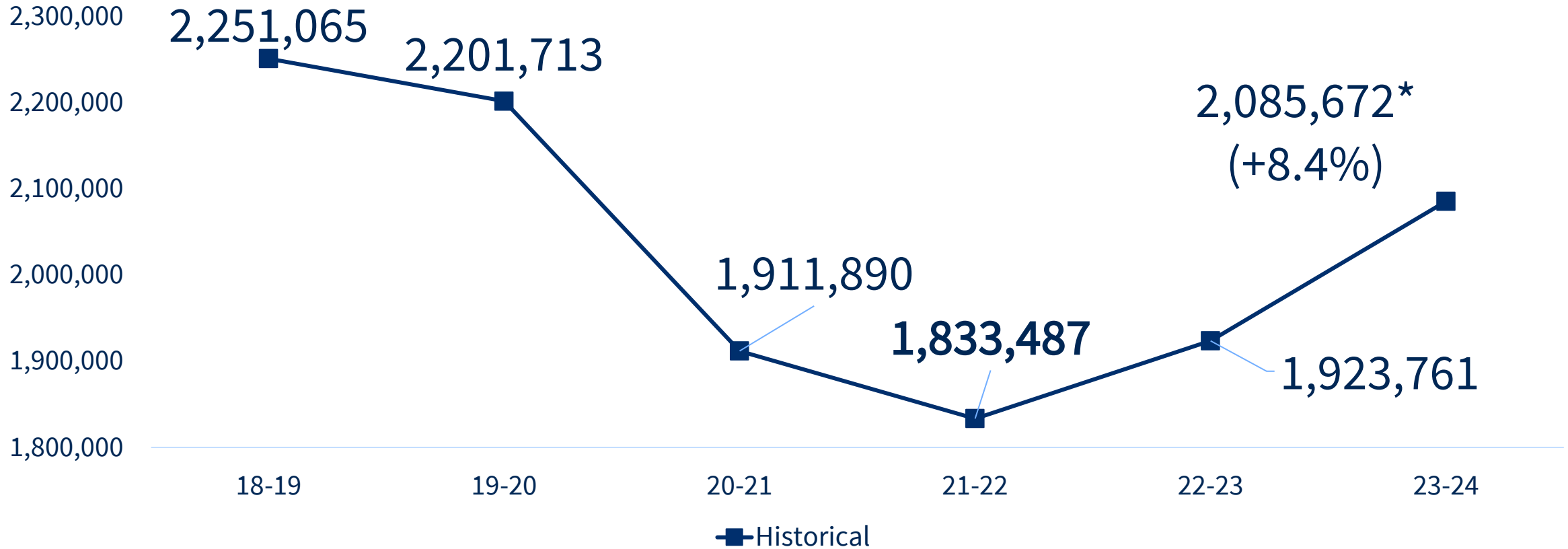
California Community Colleges taking care of  
our students, our communities, and our planet



**June 10, 2024**

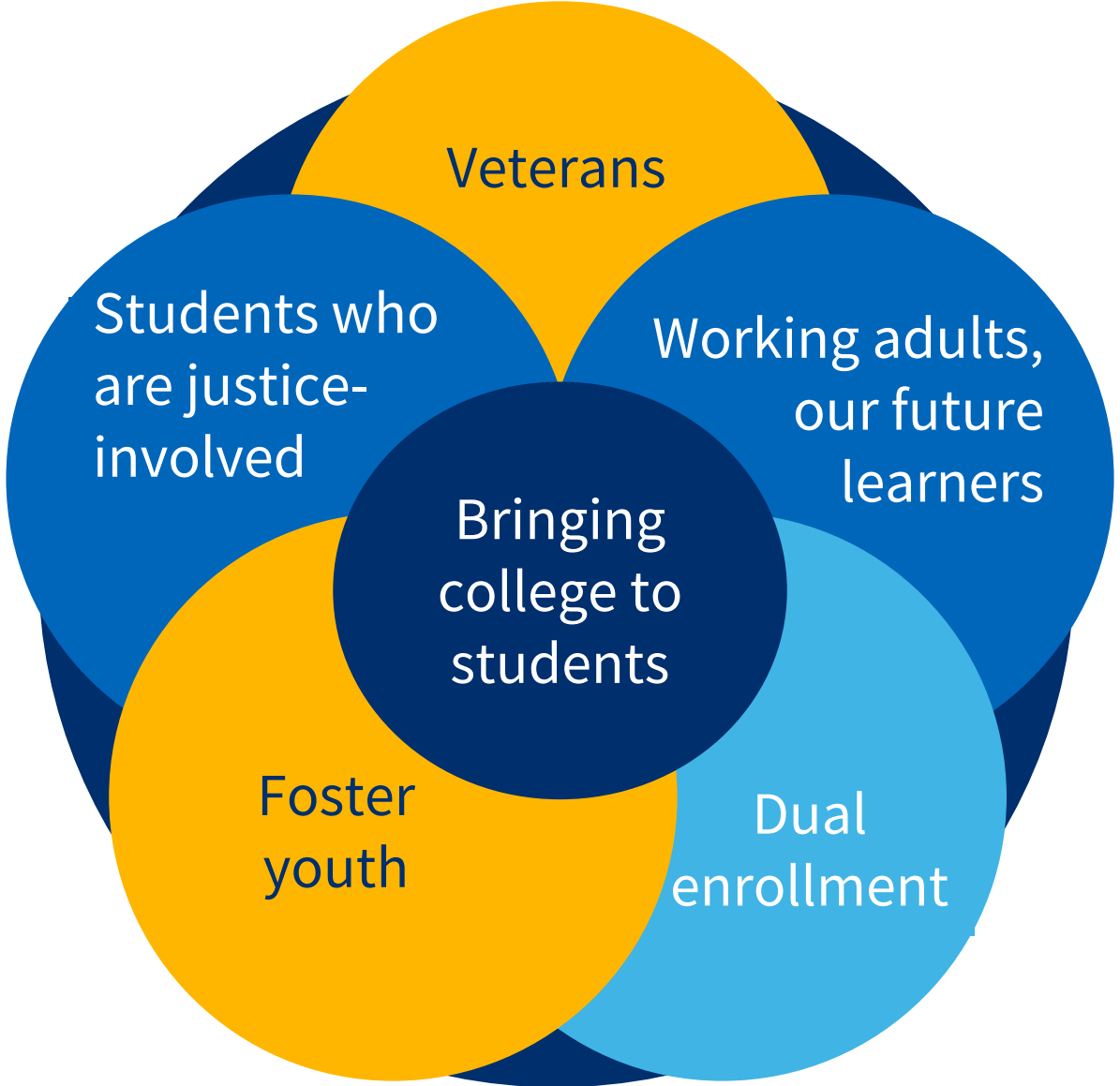
-  <https://www.cccco.edu/About-Us/Chancellors-Office/Meet-the-Chancellor>
-  [sonya.christian.96](https://www.facebook.com/sonya.christian.96)
-  [@sonyachristian](https://twitter.com/sonyachristian)
-  [sonyachristianblog.com](https://sonyachristianblog.com)  
[workforceandeconomicmobility.com](https://workforceandeconomicmobility.com)

# Enrollment Is Rebounding at California's Community Colleges



*Historical data is in blue with baseline year in 2021-2022 in bold. \*2023-24 data is projected using Fall 2023 increase (in parentheses). Annual Vision 2030 targets are in yellow with target outcome in 2029-2030 in bold*

# Deepening the work of Guided Pathways



Equity in Access

Equity in Support

Equity in Success

# Change from 2021-22 to 2022-23

	Districtwide
Student Headcounts	+2.2%
Pell	+0.7%
CCPG	+6.9%
Foster Youth	+0.5%
Veteran Students	-2.1%
Active Military	+16.9%

# Vision 2030 - Strategic Directions + Actions

## Equitable Pathways to Baccalaureate Attainment

California Community Colleges are committed to the governor's ambitious higher education goal of 70% postsecondary degree and certificate attainment among working-aged Californians by 2030.

## Equitable Workforce and Economic Development

Vision 2030 furthers the sector approach to workforce development through High Road Training Partnerships between community colleges, industry, labor and community-based organizations to invest in hands-on training for career readiness.

The priority sectors are health care, climate, STEM and technology, education and early education.

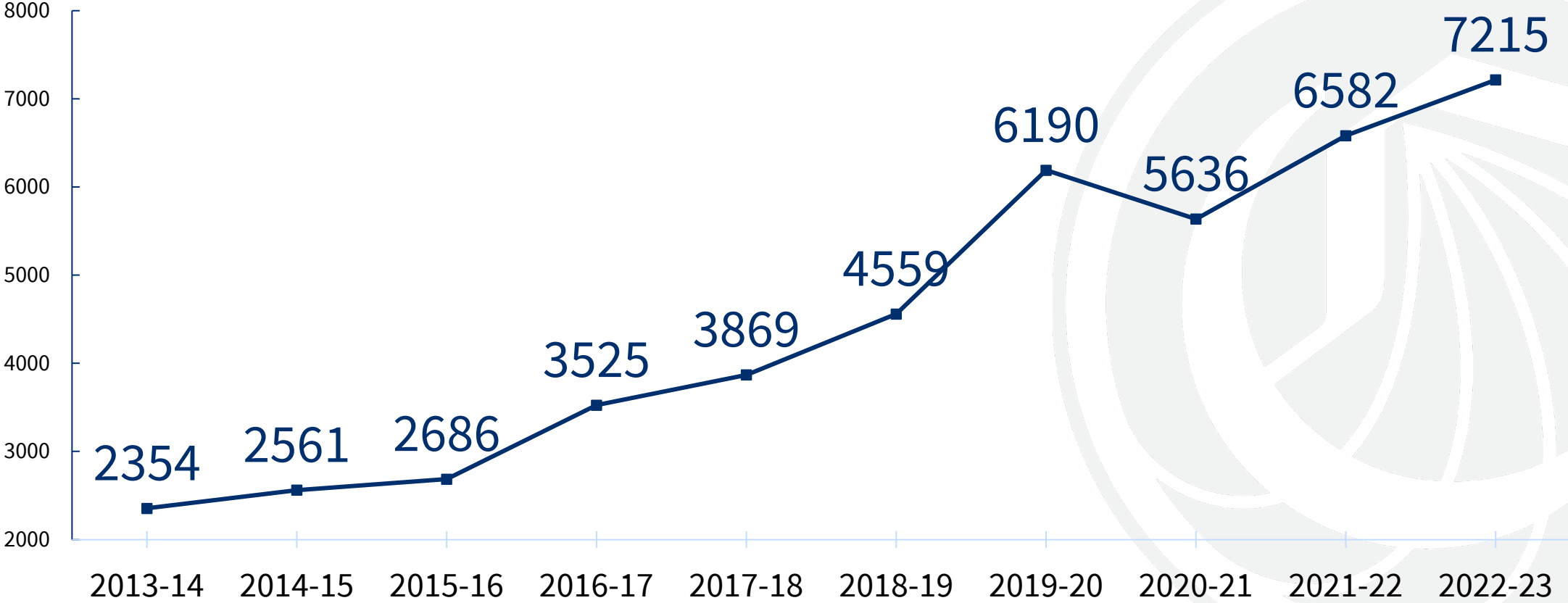
## Generative AI and the Future of Teaching and Learning

Generative AI provides new opportunities and challenges for education.

Use of tools such as ChatGPT has become a part of students' studying, research and more.

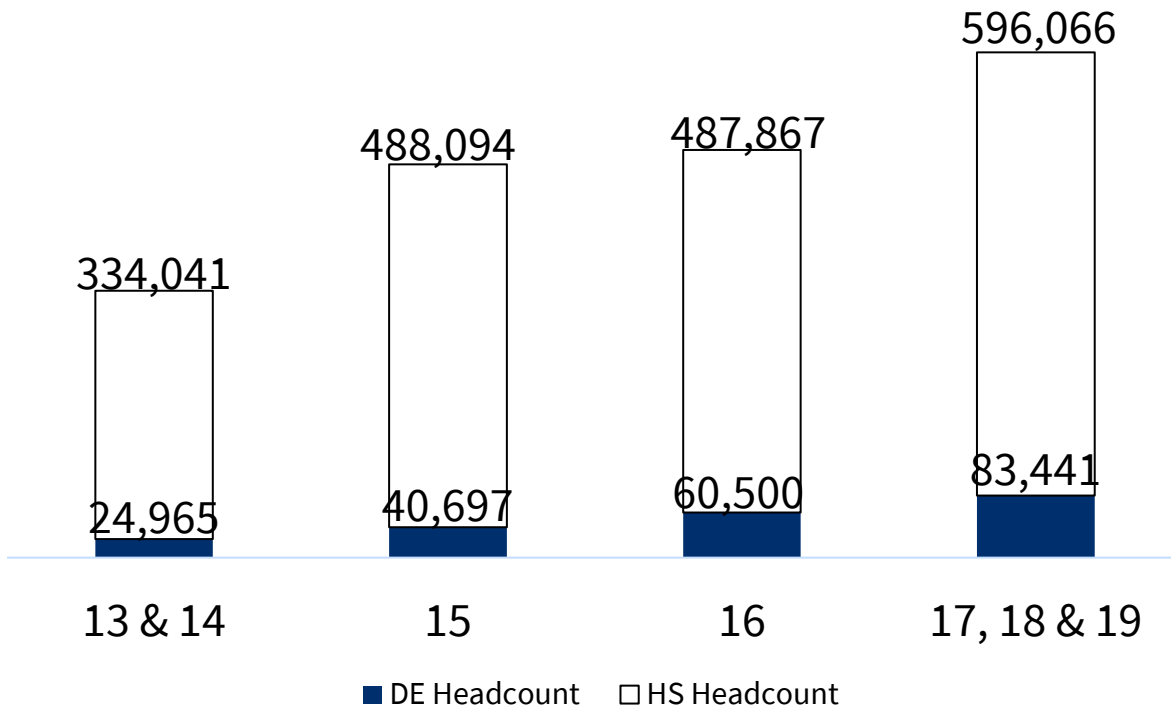
Future workforce implications with the expansion of AI

# Dual Enrollment Students, by year

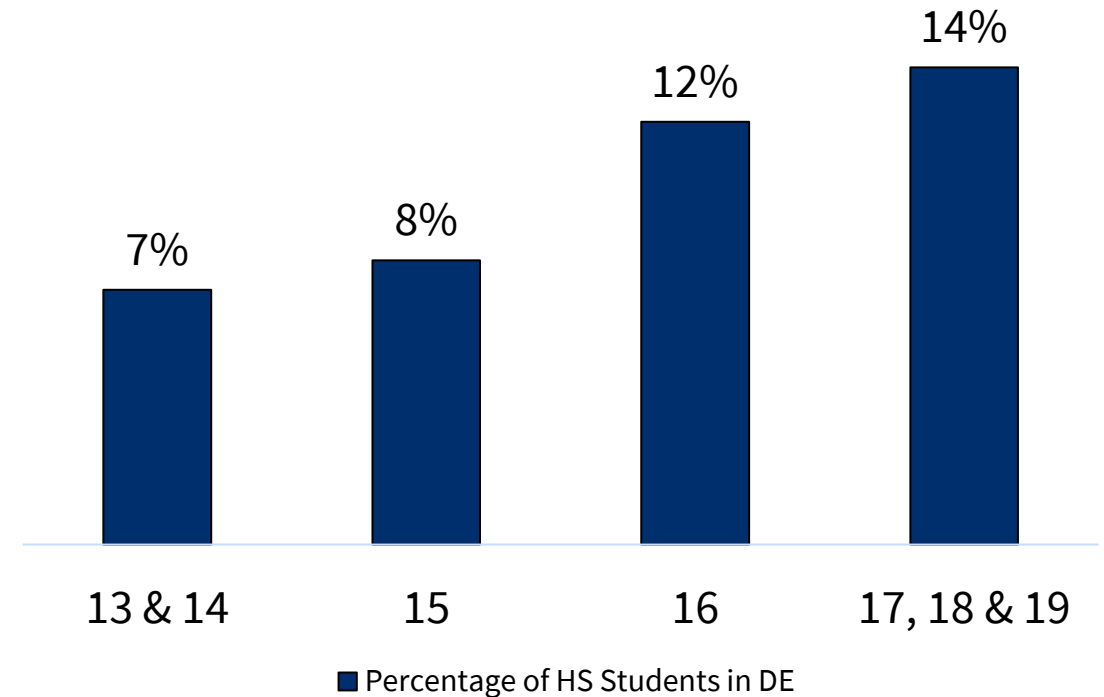


# Systemwide Dual Enrollment Opportunity Is Strong

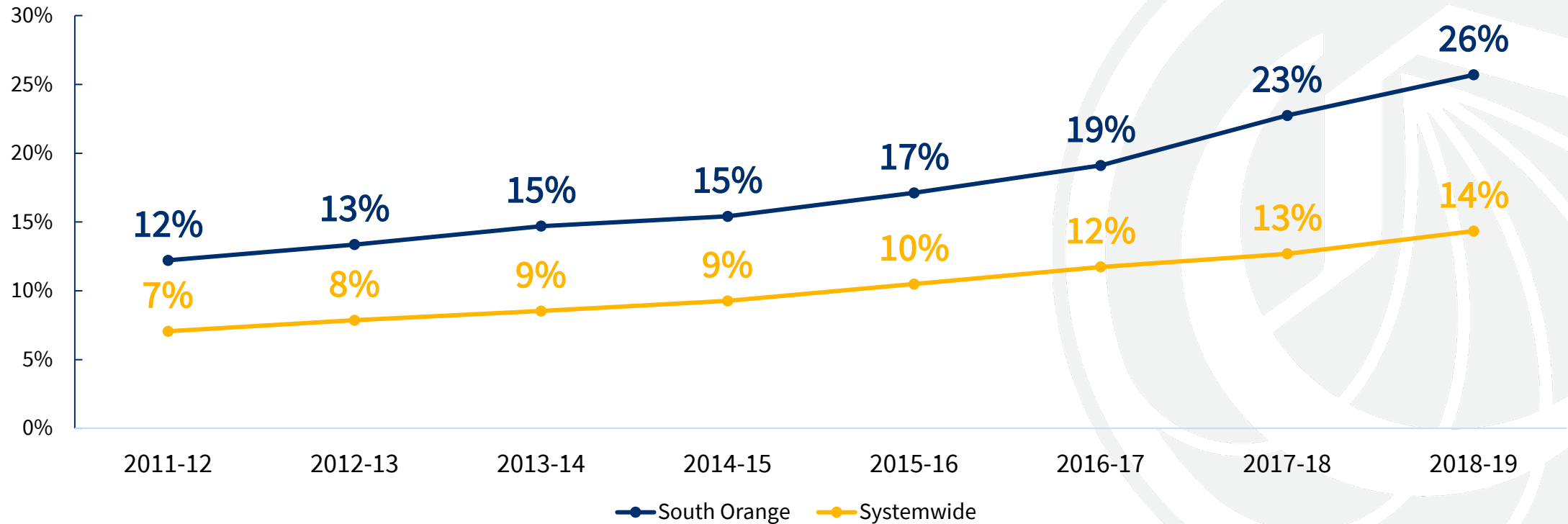
California Dual Enrollment Participation  
by Student Age | 2022-2023



Percent of High School Students  
Participating in Dual Enrollment by Age |  
2022-2023

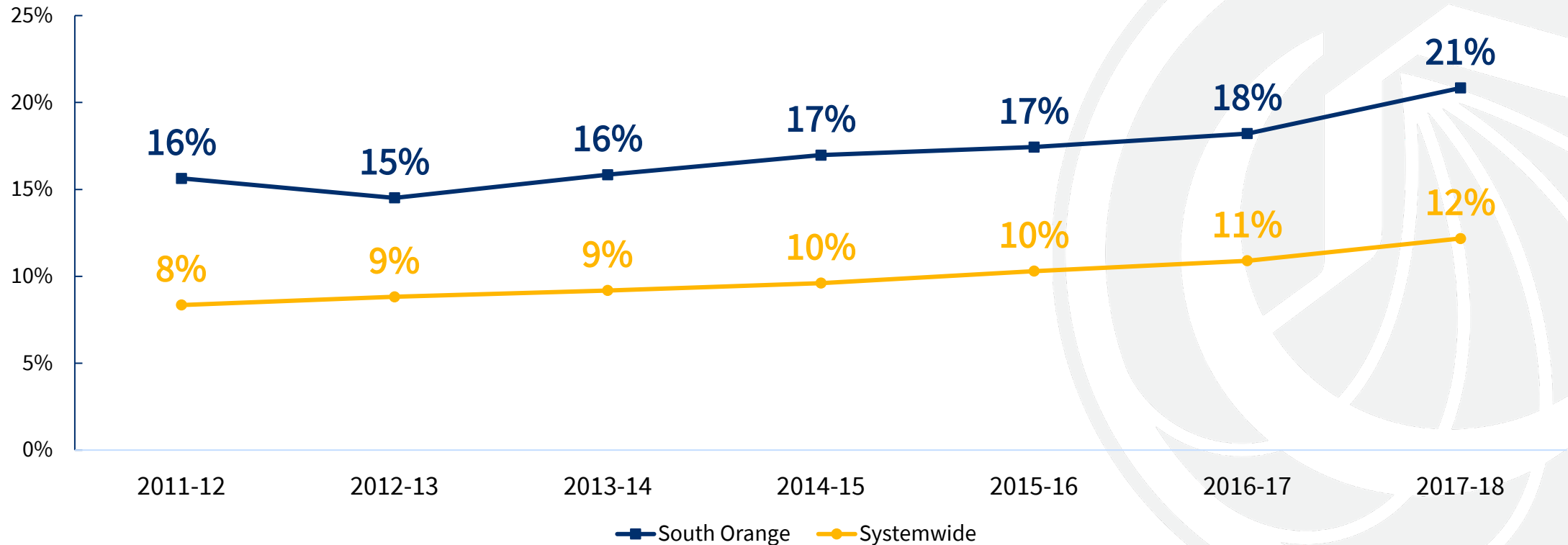


# Completion Rate

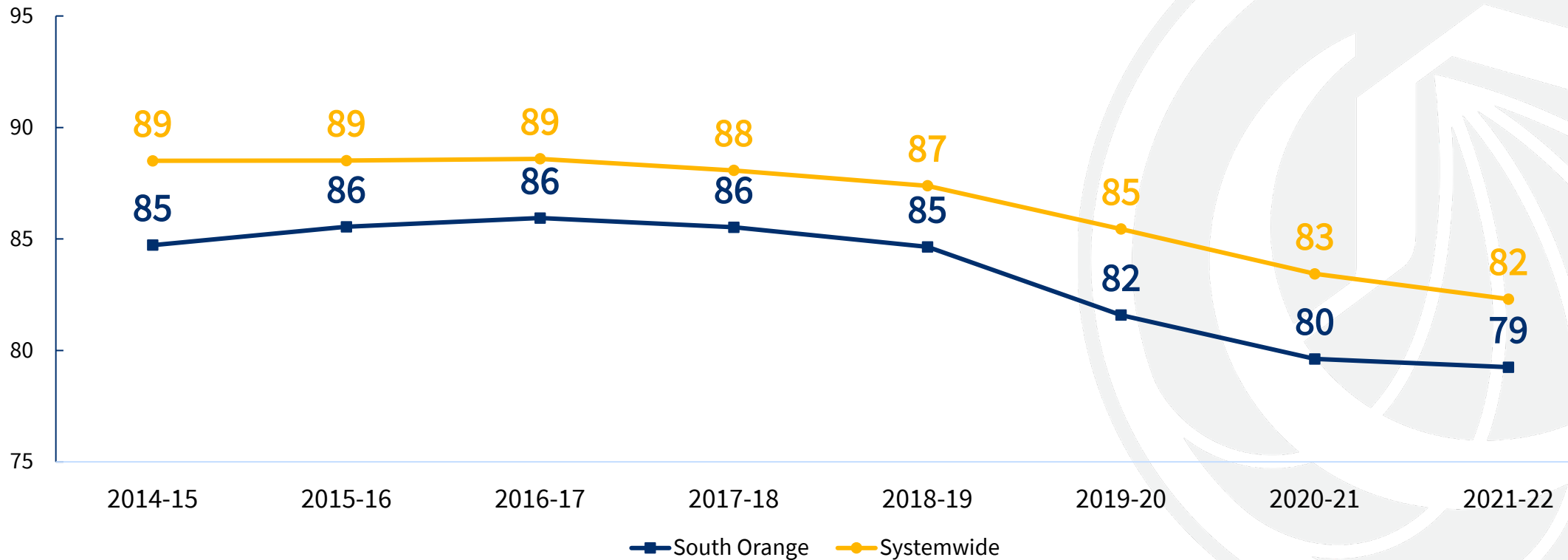




# Transfer Rate



# Units Accumulated Per Degree\*



# Strategic Direction 1: Equitable Baccalaureate Attainment

---

1. All actions, policies and procedures will be enacted centering equity and inclusion and dismantling prejudice and racism.
2. Increase equitable access, success and support for: dual enrollment in degree pathway, justice-involved and justice-impacted Californians, foster youth, those with lower wages and incomes, and veterans.
3. Improve systems of access, including financial support and program mapping.
4. Increase the number of eligible students who apply for and receive federal, state and local financial aid grants, including the federal Pell Grant, the state Cal Grant and the California College Promise Grant, among others.
5. Increase flexible term structures, flexible schedules and credit for prior learning opportunities.
6. Increase credit mobility and transfer opportunities within the California Community Colleges and to the California State University (CSU), University of California (UC) and Association of Independent California Colleges and Universities (AICCU) institutions.

# Strategic Direction 2: Equitable Workforce and Economic Development

---

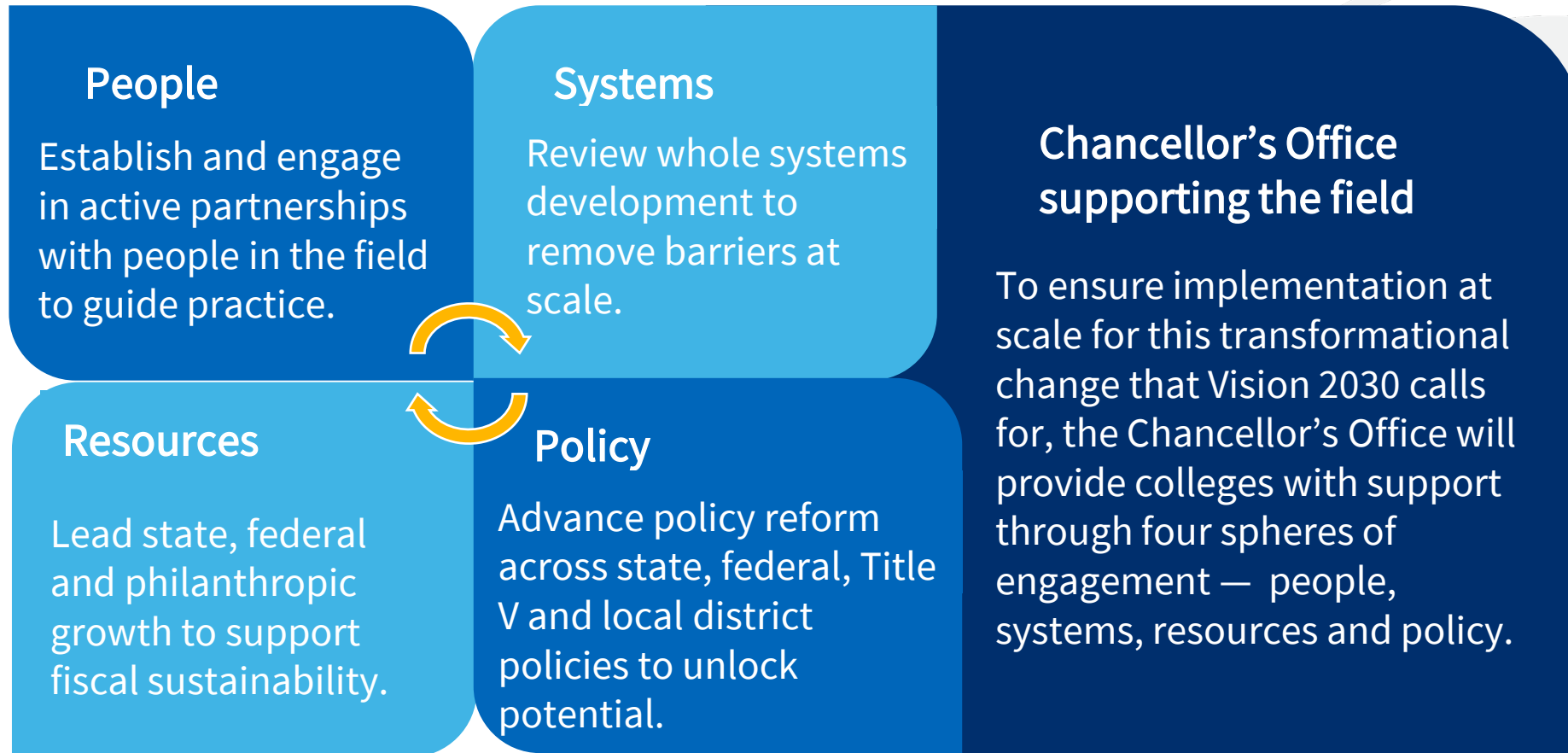
7. Increase educational access for prospective learners of low income to enhance their socioeconomic mobility by developing a customized educational and training opportunities to them.
8. **Health care:** Expand access to health care pathway programs with particular attention to nursing, mental and behavioral health.
9. **Climate action:** Advance community college engagement with the four fields of climate practice — facilities, workforce and curriculum, community engagements and benefits, and resource development.
10. **STEM:** Expand success, access and support in science, technology, engineering and math disciplines for historically underrepresented students.
11. **Education:** Increase system capacity to decrease faculty shortages in key sectors including nursing, early childhood pathways and education.

# Strategic Direction 3: Generative AI & The Future of Learning

---

12. Actively engage with the impacts of generative AI on the future of teaching and learning:
  - a. Improve the student experience with the use of generative AI as well as smart analytics applied to the “big data” systems (e.g., Student Information System, Learning Management System)
  - b. Modernize system technology infrastructure to support online education delivery and faculty.
  - c. Develop an analysis of the impact of generative AI technology and its potential implications for teaching and learning, and take the necessary action in policy reform, systems development and practices to advance success, access and support for our students.

# How Will the Chancellor's Office Advance Our Work?





**South  
Orange  
County**  
Community  
College District



It is a great time  
to be at South Orange  
County CCD!

It is a great time to be at the California Community Colleges

---

California Community Colleges taking care of  
our students, our communities, and our planet

**Our Time is Now!**

