



Chancellor's Planning Commission Workshop #1

October 11, 2024

AGENDA

- I n t r o d u c t i o n s
- C P C C h a r g e
- A p p r o a c h + T i m e l i n e
- M e a s u r e s o f S u c c e s s
- V a l u e s
- V i s i o n + M i s s i o n
- N e x t S t e p s

Commission Charge

The purpose of the Chancellor's Planning Commission (CPC) is to guide long-term planning for the SOCCCD by way of developing the new District-wide Strategic Plan and updating the Facilities Master Plan (FMP). The Commission is responsible for making recommendations to guide in the development of the Plans that align with the District's vision, mission, and values. The Commission ensures that the planning process is inclusive, involving input from managers, faculty, classified professionals, students, and community members.



Approach + Timeline

INTEGRATED PLANNING

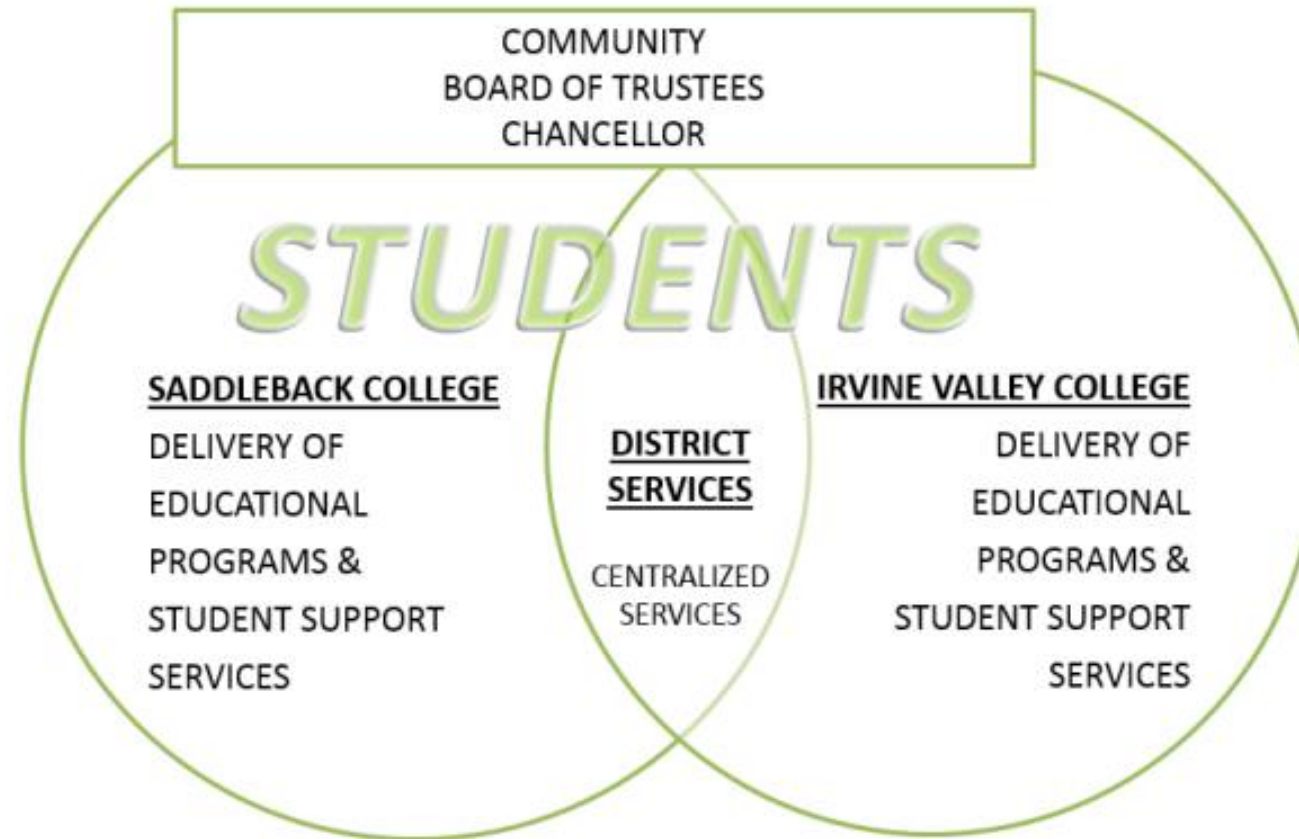
DEFINITION

*A sustainable approach to planning that
builds relationships,
aligns the organization, and
emphasizes **preparedness for change.***

— Society for College and University Planning (SCUP)

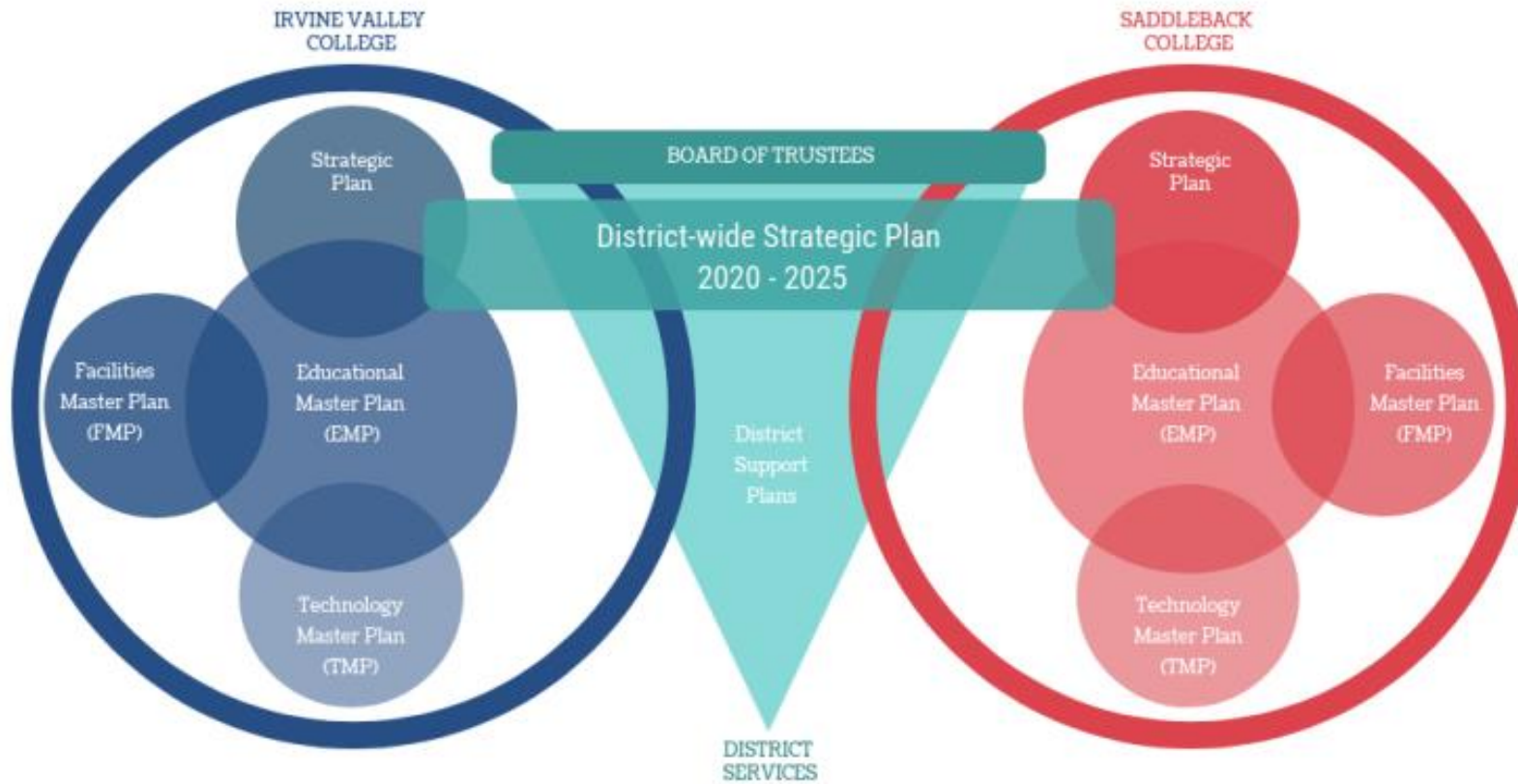
INTEGRATED PLANNING

SOCCCD MODEL

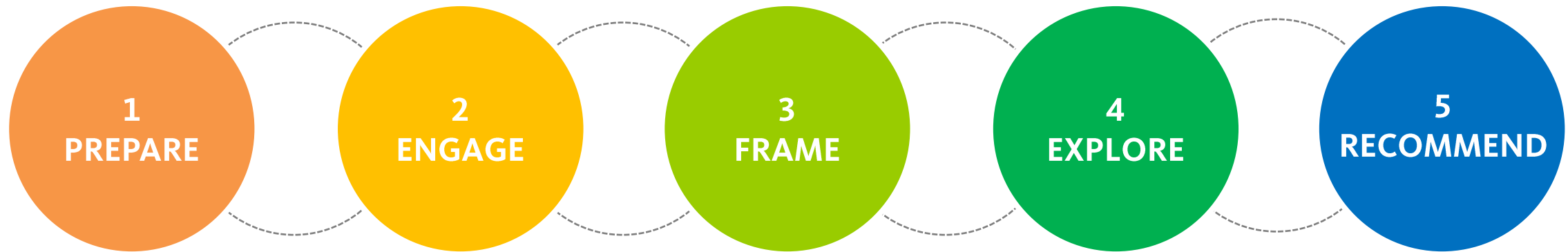


INTEGRATED PLANNING MODEL

SOCCCD MODEL



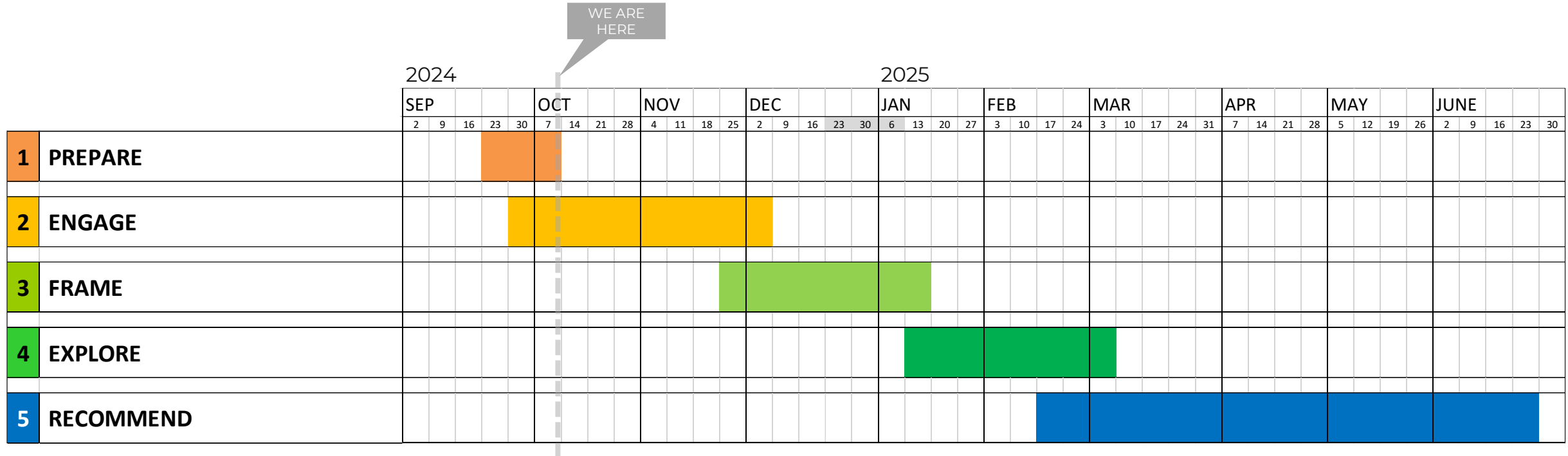
5 STEP PLANNING PROCESS



INTEGRATED + PARTICIPATORY + DATA-INFORMED



ROAD MAP



CPC Workshops

College Meetings

Online Surveys

Student Listening Sessions

Campus Vision Sessions

Community Survey

CAMPUS VISIONING SESSIONS

IRVINE VALLEY COLLEGE

Campus VISIONING SESSION



INSPIRE
SHAPING THE FUTURE
2035



October 22, 2024
10:00am - 2:00pm
Student Services Center (SSC) Quad


As we move forward with the District 2035 Strategic Plan, we would like to understand your experiences and preferences for the future. Please stop by to participate in our visioning session.

Your Voice Matters
We want to hear from you.


www.socccd.edu

SADDLEBACK COLLEGE

Campus VISIONING SESSION



INSPIRE
SHAPING THE FUTURE
2035



October 18, 2024
9:30am - 1:30pm
ATAS LOBBY

As we move forward with the District 2035 Strategic Plan, we would like to understand your experiences and preferences for the future. Please stop by to participate in our visioning session.

Your Voice Matters
We want to hear from you.

www.socccd.edu



Measures of Success

INSPIRE 2035

WHAT DOES SUCCESS LOOK LIKE?

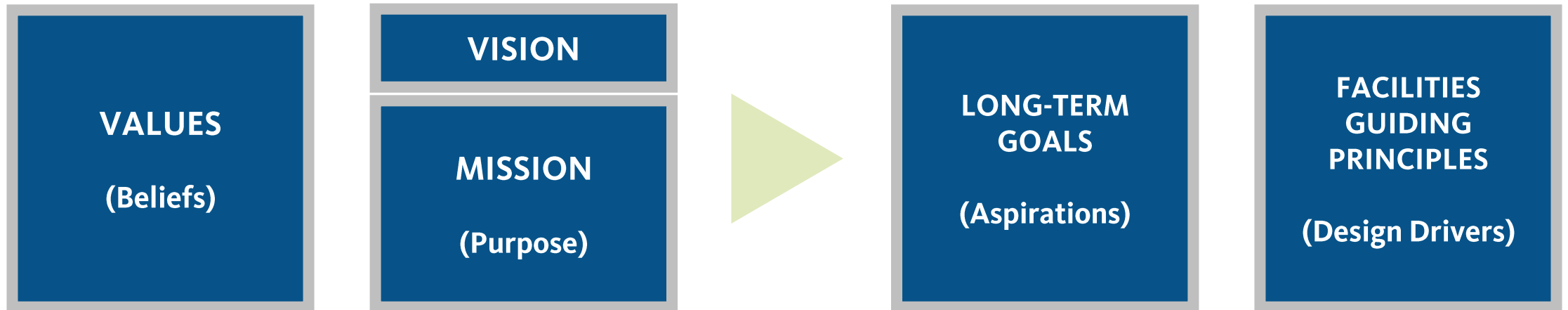




Values

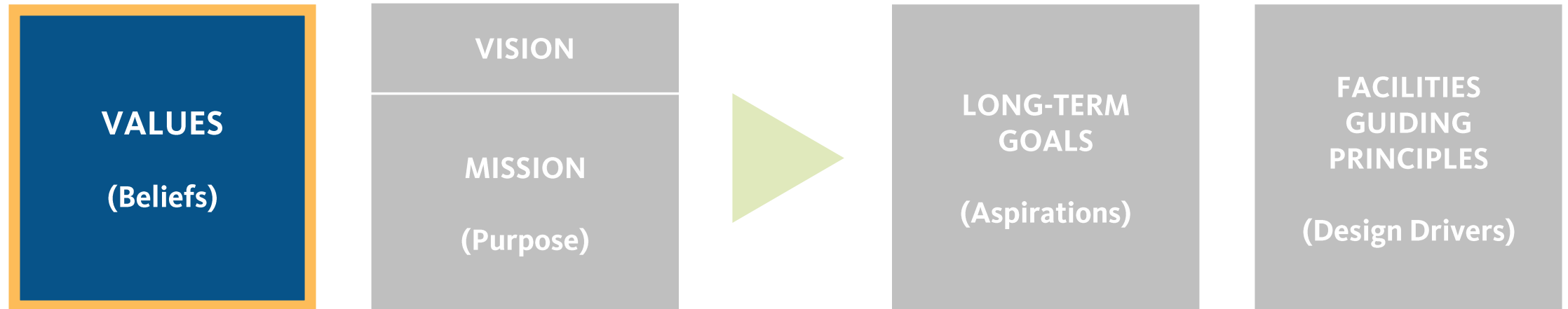
INSPIRE 2035

FOUNDATIONAL ELEMENTS



VALUES

CORE BELIEFS



VALUES

CORE BELIEFS

What are the values that must be embedded in the work that happens at SOCCCD?



June 2024

VALUES

CORE BELIEFS

What are the values that must be embedded in the work that happens at SOCCCD?



VALUES

Draft for Discussion





Mission + Vision

INSPIRE 2035

FOUNDATIONAL ELEMENTS



MISSION

PROMISE(S)

What are the **MOST IMPORTANT NUGGETS** that should inform the SOCCCD Mission?



MISSION

P R O M I S E (S)

What are the top five nuggets that should inform the SOCCCD mission?



MISSION

DRAFT NUGGETS

How does this resonate?

Is anything missing?

Excellence

Innovation

Student-Centered

Workforce Development

Academic Achievement

Equitable Access

Economic Vitality

Transformative

Lifelong Learning

Career Goals



Next Steps

CAMPUS VISIONING SESSIONS

IRVINE VALLEY COLLEGE

Campus VISIONING SESSION



INSPIRE
SHAPING THE FUTURE
2035



October 22, 2024
10:00am - 2:00pm
Student Services Center (SSC) Quad


As we move forward with the District 2035 Strategic Plan, we would like to understand your experiences and preferences for the future. Please stop by to participate in our visioning session.

Your Voice Matters
We want to hear from you.


www.socccd.edu

SADDLEBACK COLLEGE

Campus VISIONING SESSION



INSPIRE
SHAPING THE FUTURE
2035



October 18, 2024
9:30am - 1:30pm
ATAS LOBBY

As we move forward with the District 2035 Strategic Plan, we would like to understand your experiences and preferences for the future. Please stop by to participate in our visioning session.

Your Voice Matters
We want to hear from you.

www.socccd.edu