

FACILITIES PLAN STATUS REPORT  
December 16, 2024

**CAPITAL IMPROVEMENT PLANNING**

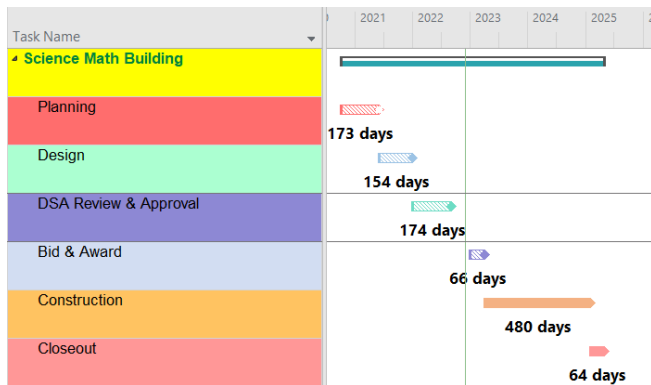
The decision to design and construct capital improvement projects begins with the Education Master and Strategic Planning (EMSP) process and continues with the Facilities Master Plan (FMP). The last EMSP cycle was completed June 2020, and the FMP cycle was completed July 2020. Each year, the colleges review the FMP during their budget planning cycle and revise project totals and/or prioritization rankings to best meet the colleges' needs for the upcoming fiscal year. The 2020 EMSP and FMP reports are available at the District [website](#). This report contains information on projects over \$1.5 million that are listed in the FMP, as revised annually by the colleges and the Capital Improvement Committee and includes project photos or renderings for both colleges and projects that include associated planning efforts. The report is provided quarterly in March, June, September, and December.

**SADDLEBACK COLLEGE**

**1. MATH and COMPUTER SCIENCE BUILDING**

Project Description: The project will downsize and replace the existing Science Math building to meet the educational needs of Saddleback College for Math and Computer Science. This project will construct a new building of 32,100 assignable square feet (ASF) and 49,385 gross square feet (GSF). The new Math and Computer Science building will house the Computer Sciences (CS) Department's computer and cyber security labs; the Math Department's labs and lecture classrooms; a large assembly room; a broadcast room (distance education); library study and general collaboration spaces; a division office; faculty, staff, and adjunct offices; workrooms; storage rooms; meeting rooms; a lounge; cyber services; and data processing rooms. The new Math and Computer Science building project will create a direct and intuitive connection between the upper campus main quad and the lower campus Parking Lot No. 10, by replacing the existing bridge and expanding the plaza between the Math and Computer Science building and the LRC building.

|                           |          |                             |          |
|---------------------------|----------|-----------------------------|----------|
| Start Preliminary Plans   | Oct 2020 | Award Construction Contract | Mar 2023 |
| Start Working Drawings    | Jun 2021 | Complete Construction       | Aug 2025 |
| Complete Working Drawings | Dec 2021 | Advertise for Equipment     | Feb 2025 |
| DSA Final Approval        | Aug 2022 | DSA Close-out               | Nov 2025 |



**Budget Narrative:** Budget reflects Board action on 6/22/2015, 4/27/2020, 4/26/2021, 4/18/2022, 4/24/2023, and 4/29/2024. On June 22, 2015, the Board approved \$750,000. On April 27, 2020, the Board approved \$4,300,000. On April 26, 2021, the Board approved \$6,472,015. On April 18, 2022, the Board approved \$12,004,294. On April 24, 2023, the Board approved \$12,004,294. On April 29, 2024, the Board approved \$21,376,408.

|                              | <u>Original</u> | <u>Revision</u> | <u>Total</u> |
|------------------------------|-----------------|-----------------|--------------|
| Project Budget:              | \$33,325,956    | \$47,023,055    | \$80,349,011 |
| District Funding Commitment: | \$16,624,624    | \$42,082,387    | \$58,707,011 |
| Anticipated State Match:     | \$16,701,332    | \$ 4,940,668    | \$21,642,000 |
| Basic Aid Allocation:        | \$ 750,000      | \$56,157,011    | \$56,907,011 |
| Basic Aid Funding Need:      | \$ 1,800,000    | \$ 0            | \$ 1,800,000 |

**Status:** Construction Phase: 50 percent complete.

**In Progress:** Contractor continues installation of the interior framing and drywall. In-wall rough-in and over-head mechanical, electrical, and plumbing (MEP) infrastructure is ongoing. Installation of the exterior sheathing and building envelope waterproofing is underway.

**Recently Completed:** Placed the slab on grade concrete, roof deck, and the main air handling unit. Installed the exterior framing and fire sprinkler system. Rough grading operation for the exterior amphitheater was completed. Placed concrete on the third-floor bridge that leads to the new outdoor plaza.

**Focus:** Completion of interior metal framing and rough-in of MEP infrastructure. Installation of roof on the main roof deck, interior drywall, application of sound absorption spray on the underside of the instructional spaces metal deck, bridge pile caps, and abutment walls at Library Road.



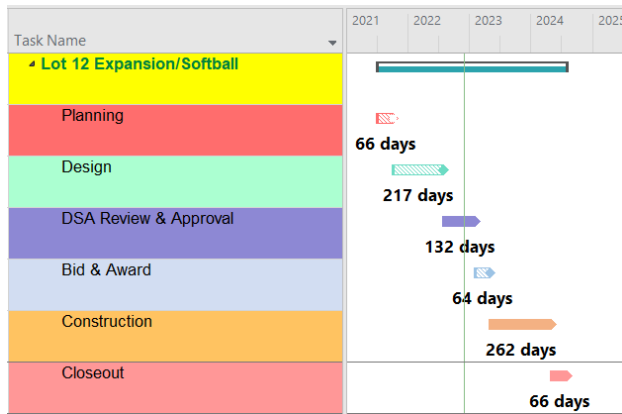
East Elevation

## 2. LOT 12 EXPANSION / SOFTBALL FIELD RENOVATION

**Project Description:** The project will replace the existing softball field and address Title IX and accessibility issues by installing restrooms, a ticketing booth, a press box, and a concession

stand; building batting cages and dugouts for both the home team and visitors, and creating accessible paths from the field to parking Lot 12 and to the PE Complex and the Stadium. The project will be integrated into the campus topography. The project will also create a new parking Lot 12A, adding approximately 144 new parking spaces.

|                           |          |                             |          |
|---------------------------|----------|-----------------------------|----------|
| Start Preliminary Plans   | Jul 2021 | Award Construction Contract | Apr 2023 |
| Start Working Drawings    | Oct 2021 | Complete Construction       | Feb 2025 |
| Complete Working Drawings | Jul 2022 | Advertise for Equipment     | Dec 2023 |
| DSA Final Approval        | Feb 2023 | DSA Close-out               | May 2025 |



**Budget Narrative:** Budget reflects Board action on 4/26/2021, 4/18/2022, and 4/24/2023. On April 26, 2021, the Board approved \$10,189,422. On April 18, 2022, the Board approved \$3,707,853. On April 24, 2023, the Board approved increasing the budget utilizing \$1,700,000 in college redevelopment funds.

|                              | Original     | Revision      | Total        |
|------------------------------|--------------|---------------|--------------|
| Project Budget:              | \$13,897,275 | \$ 1,700,000  | \$15,597,275 |
| District Funding Commitment: | \$13,897,275 | \$ 1,700,000  | \$15,597,275 |
| Anticipated State Match:     | \$ 0         | \$ 0          | \$ 0         |
| College Contribution:        | \$ 0         | \$ 1,700,000  | \$ 1,700,000 |
| Basic Aid Allocation:        | \$10,189,422 | \$ 3,707,853  | \$13,897,275 |
| Basic Aid Funding Need:      | \$ 3,707,853 | \$(3,707,853) | \$ 0         |

**Status:** Construction Phase: 90 percent complete.

**In Progress:** *The electrical and low voltage contractors continue to pull wire and make final connections. Irrigation and landscaping installation is ongoing. The general contractor is working on the cleanup of the site in anticipation of project completion.*

**Recently Completed:** *Installed synthetic turf and chain-link and ornamental fencing. The ADA concrete ramp, flatwork around the buildings, asphalt road, and retaining walls were completed. The contractor installed the lockers in the team room and casework was completed in the concession stand. The restroom finishes and drinking fountains were installed.*

**Focus:** Completion of mechanical, electrical, and plumbing *finishes throughout the project. Installation of the flooring and benches in the dugouts.* Completion of the irrigation system and installation of the plant materials. *Final cleanup of the site and demobilization.*

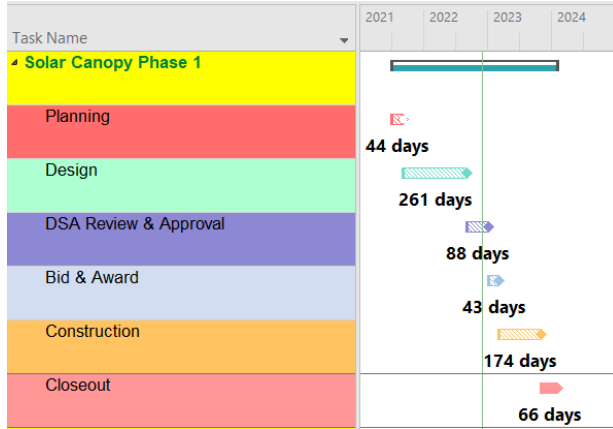


Softball Field

### 3. SOLAR CANOPY PHASE 1

**Project Description:** This project evaluated all campus parking lots for suitability for solar shade structures and identified the priority and phasing for construction. This first phase encompasses parking lot 5A1. The solar shades will have a capacity of 1.3 MW, which represents approximately 25 percent of the campus utility usage, based on the analysis done in the Integrated Energy Master Plan.

|                           |          |                             |           |
|---------------------------|----------|-----------------------------|-----------|
| Start Preliminary Plans   | Jul 2021 | Award Construction Contract | Apr 2023  |
| Start Working Drawings    | Sep 2021 | Complete Construction       | July 2025 |
| Complete Working Drawings | Aug 2022 | Advertise for Equipment     | N/A       |
| DSA Final Approval        | Jan 2023 | DSA Close-out               | Oct 2025  |



**Budget Narrative:** Budget reflects Board action on 4/26/2021, 4/18/2022, and 4/24/2023. On April 26, 2021, the Board approved \$1,124,760. On April 18, 2022, the Board approved \$4,423,587. On April 24, 2023, the Board approved increasing the budget utilizing \$1,400,000 in college redevelopment funds.

|                              | <u>Original</u> | <u>Revision</u> | <u>Total</u> |
|------------------------------|-----------------|-----------------|--------------|
| Project Budget:              | \$5,548,347     | \$ 1,400,000    | \$ 6,948,347 |
| District Funding Commitment: | \$5,548,347     | \$ 1,400,000    | \$ 6,948,347 |
| Anticipated State Match:     | \$ 0            | \$ 0            | \$ 0         |
| College Contribution:        | \$ 0            | \$ 1,400,000    | \$ 1,400,000 |
| Basic Aid Allocation:        | \$1,124,760     | \$ 4,423,587    | \$ 5,548,347 |
| Basic Aid Funding Need:      | \$4,423,587     | \$ (4,423,587)  | \$ 0         |

**Status:** Construction Phase: 88 percent complete.

**In Progress:** *Project is idle awaiting equipment delivery.*

**Recently Completed:** *Project is idle awaiting equipment delivery.*

**Focus:** Delivery of transformer and switchgear to complete project is delayed due to an industry-wide electrical equipment delay in manufacturing.

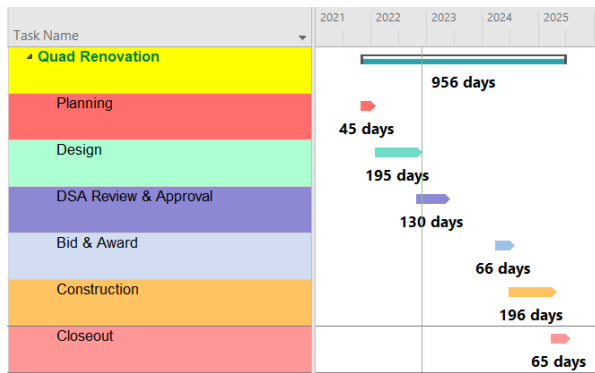


Solar Canopies – Southeast Elevation

#### 4. QUAD BARRIER

**Project Description:** This project includes a new ADA compliant network of pedestrian paths, which will connect all areas of the upper quad. All landscaping and irrigation systems will be renovated to meet both sustainable goals and provide improved access to faculty, staff, and students. The project will also address deficient lighting and storm water management needs. Emphasis will be made to develop outdoor collaborative spaces and protection of natural resources while acknowledging the long-term landscape management needs of the site.

|                           |          |                             |          |
|---------------------------|----------|-----------------------------|----------|
| Start Preliminary Plans   | Nov 2021 | Award Construction Contract | May 2024 |
| Start Working Drawings    | Feb 2022 | Complete Construction       | Feb 2025 |
| Complete Working Drawings | Oct 2022 | Advertise for Equipment     | Oct 2024 |
| DSA Final Approval        | Dec 2022 | DSA Close-out               | May 2025 |



**Budget Narrative:** Budget reflects Board action on 4/27/2020, 4/18/2022, 4/29/2024, and 5/20/2024. On April 27, 2020, the Board of Trustees approved \$500,000 for this project. On April 18, 2022, the Board approved \$1,720,199. On April 29, 2024, the Board approved \$1,600,000. On May 20, 2024, the Board approved increasing the budget utilizing \$3,125,000 in college redevelopment funds.

|                              | Original  | Revision    | Total       |
|------------------------------|-----------|-------------|-------------|
| Project Budget:              | \$500,000 | \$6,445,199 | \$6,945,199 |
| District Funding Commitment: | \$500,000 | \$3,320,199 | \$3,820,199 |
| Anticipated State Match:     | \$ 0      | \$ 0        | \$ 0        |
| College Contribution:        | \$ 0      | \$3,125,000 | \$3,125,000 |
| Basic Aid Allocation:        | \$500,000 | \$3,320,199 | \$3,820,199 |
| Basic Aid Funding Need:      | \$ 0      | \$ 0        | \$ 0        |

**Status:** Construction Phase: 48 percent complete.

**In Progress:** Continuing demolition, grading, and installation of underground utilities and concrete pathways in the northern section of the quad. Procurement of pavers, trees, and plants is ongoing. Finalizing concrete planter walls outside of BGS building.

**Recently Completed:** Finished grading and underground utility installation in the southern section of the quad. Installed concrete pathways along the west side of the SSC building.

**Focus:** Installation of underground utilities in the northern section of the quad, concrete seat walls, pathway curbs, center landscape planter, and paver pathways in the southern section of the quad.

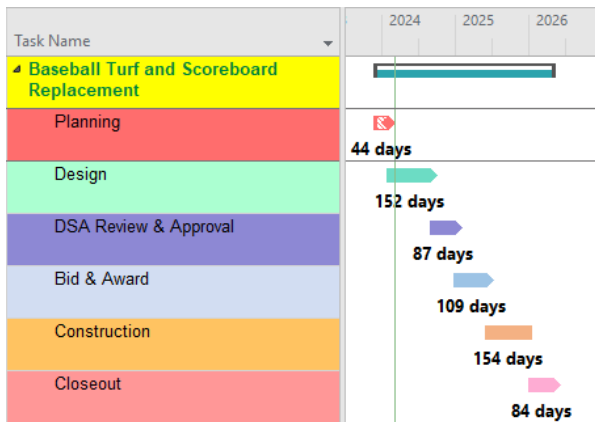


Quad – East Elevation

## 5. BASEBALL TURF AND SCOREBOARD REPLACEMENT

**Project Description:** The project will replace the existing natural turf baseball field to full synthetic turf and will replace the antiquated scoreboard with a new state of the art video board and AV upgrades. The project also includes slope stabilization and continuation of protective netting around the field, as well as landscaping and stormwater management improvements to support the college’s sustainability goals.

|                           |          |                             |          |
|---------------------------|----------|-----------------------------|----------|
| Start Preliminary Plans   | Dec 2023 | Award Construction Contract | Jun 2025 |
| Start Working Drawings    | Feb 2024 | Complete Construction       | Jan 2026 |
| Complete Working Drawings | Dec 2024 | Advertise for Equipment     | Aug 2025 |
| DSA Final Approval        | Mar 2025 | DSA Close-out               | Apr 2026 |



**Budget Narrative:** Budget reflects Board action on 4/18/2022, 4/24/2023, and 4/29/2024. On April 18, 2022, the Board approved \$600,000. On April 24, 2023, the Board approved \$600,000. On April 29, 2024, the Board approved \$608,198.

|                              | <u>Original</u> | <u>Revision</u> | <u>Total</u> |
|------------------------------|-----------------|-----------------|--------------|
| Project Budget:              | \$2,000,000     | \$6,782,723     | \$8,782,723  |
| District Funding Commitment: | \$2,000,000     | \$6,782,723     | \$8,782,723  |
| Anticipated State Match:     | \$ 0            | \$ 0            | \$ 0         |
| Basic Aid Allocation:        | \$ 600,000      | \$1,208,198     | \$1,808,198  |
| Basic Aid Funding Need:      | \$1,400,000     | \$5,574,525     | \$6,974,525  |

Status: Design Phase.

In Progress: 50% Construction Documents are underway by the architect.

Recently Completed: 100% Design Development stage was completed.

Focus: Develop the 50% Construction Documents for campus review.



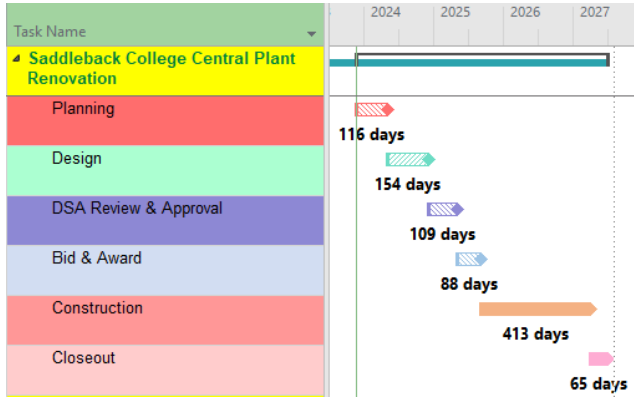
Baseball Field Design

## 6. SADDLEBACK COLLEGE CENTRAL PLANT RENOVATION

Project Description: This project will entail renovating or replacing the existing Central Plant Building on the Saddleback College campus. The project will decommission the cogeneration system, and replace the existing chillers, cooling towers, pumps, boilers, and all the associated infrastructure with new state-of-the-art efficient equipment, *and add a Thermal Energy Storage (TES) tank*. The new systems will provide additional campus resiliency and redundancy and will maximize the benefit from the solar and the 12kV upgrade projects currently being implemented. This project will support the college's sustainability goals by creating paths to NetZero GHG emissions.



|                           |           |                             |          |
|---------------------------|-----------|-----------------------------|----------|
| Start Preliminary Plans   | Nov 2023  | Award Construction Contract | Jan 2026 |
| Start Working Drawings    | May 2024  | Complete Construction       | Aug 2027 |
| Complete Working Drawings | June 2025 | Advertise for Equipment     | Feb 2025 |
| DSA Final Approval        | Nov 2025  | DSA Close-out               | Nov 2027 |



**Budget Narrative:** Budget reflects Board action on 4/24/2023. On April 24, 2023, the Board approved \$7,925,145 in Basic Aid and \$3,559,528 as part of the State scheduled maintenance allocation. In FY 2023-24, the college contributed redevelopment funds of \$6,707,395.

|                                 | Original     | Revision     | Total        |
|---------------------------------|--------------|--------------|--------------|
| Project Budget:                 | \$18,192,068 | \$20,787,765 | \$38,979,833 |
| District Funding Commitment:    | \$14,632,540 | \$ 0         | \$14,632,540 |
| Anticipated State Match (PPIS): | \$ 3,559,528 | \$ 0         | \$ 3,559,528 |
| College Contribution:           | \$ 6,707,395 | \$ 0         | \$ 6,707,395 |
| Basic Aid Allocation:           | \$ 7,925,145 | \$ 0         | \$ 7,925,145 |
| Basic Aid Funding Need:         | \$ 0         | \$20,787,765 | \$20,787,765 |

**Status:** Design Phase.

**In Progress:** Review of 50% Design Development package with stakeholders is underway. Collecting metering data to measure the temperature and flow of the chilled and heating hot water. Finalizing the pipe flow model to conclude equipment selection. Evaluation continues of structural and geotechnical design options for the new Thermal Energy Storage tank.

**Recently Completed:** DSA approved the Evaluation & Design Criteria Report for the existing building structure seismic evaluation. Concluded the geotechnical investigation and soil analysis report. The college leadership and stakeholders approved the Schematic Design Package.

**Focus:** Complete the 50% Design Development review with stakeholders and obtain sign-off. Perform destructive testing at the existing Central Plant building per DSA Material Testing Program for seismic evaluation. Kick-off the 100% Design Development Phase.

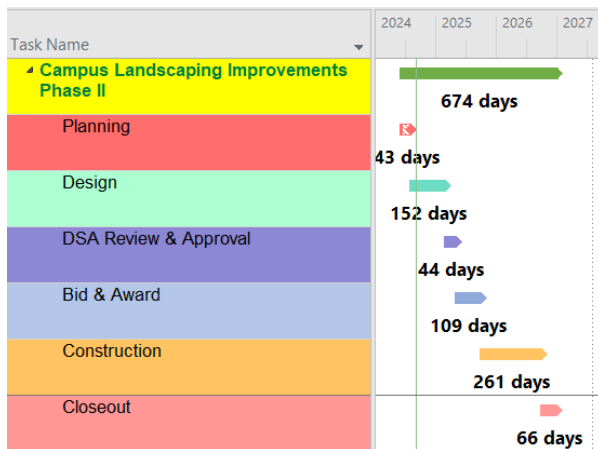


Rendering of Central Plant & TES Tank – Northwest Elevation

## 7. SADDLEBACK COLLEGE LANDSCAPE IMPROVEMENTS PHASE 2

**Project Description:** This project utilizes the campus landscape design standards to improve and enhance planting, irrigation, and storm drainage at BGS maintenance road slope, chemical storage yard, parking lots 5 and 5A, parking lots 9 and 10 islands, the area between parking lot 10 and 11, the slope between Horticulture and College Drive E, the slope between the pool and Fine Arts access road, the Avery entrance slopes, *temp Lot 1C*, and the corner of Security Road and College Drive, lower Marguerite entrance, and the area east of parking lot 5B. The lower Marguerite entrance will be updated to include an ADA accessible pathway from Marguerite Parkway to the Fine Arts quad. All improvements will meet the goals of the Facilities Master Plan related to sustainability.

|                           |           |                             |           |
|---------------------------|-----------|-----------------------------|-----------|
| Start Preliminary Plans   | June 2024 | Award Construction Contract | Sept 2025 |
| Start Working Drawings    | Aug 2024  | Complete Construction       | Sept 2026 |
| Complete Working Drawings | Feb 2025  | Advertise for Equipment     | Feb 2026  |
| DSA Final Approval        | Apr 2025  | DSA Close-out               | Dec 2026  |



**Budget Narrative:** Budget reflects Board action on 4/18/2022. On April 18, 2022, the Board approved \$2,000,000.

|                              | <u>Original</u> | <u>Revision</u> | <u>Total</u> |
|------------------------------|-----------------|-----------------|--------------|
| Project Budget:              | \$ 6,356,356    | \$ 0            | \$ 6,356,356 |
| District Funding Commitment: | \$ 6,356,356    | \$ 0            | \$ 6,356,356 |
| Anticipated State Match:     | \$ 0            | \$ 0            | \$ 0         |
| College Contribution:        | \$ 4,356,356    | \$ 0            | \$ 4,356,356 |
| Basic Aid Allocation:        | \$ 2,000,000    | \$ 0            | \$ 2,000,000 |
| Basic Aid Funding Need:      | \$ 0            | \$ 0            | \$ 0         |

Status: Design Phase.

In Progress: 100% Design Development drawings are underway.

Recently Completed: 50% Design Development drawings were completed and approved by the stakeholders.

Focus: Continue developing the 100% Design Development drawings for campus review.

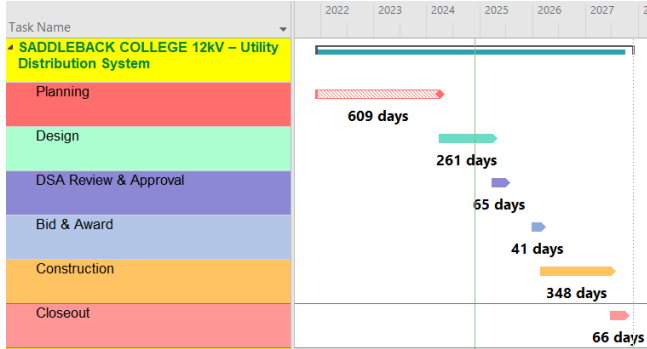


Lot 1C Pathway – Plan View

## **8. SADDLEBACK COLLEGE 12kV – Utility Distribution System**

Project Description: The project consists of major electrical infrastructure upgrades campus-wide to replace outdated equipment, incorporate network controls, and provide necessary upgrades to accommodate the 2020 Facilities Master Plan and associated revisions. Work includes replacement of medium voltage switches and their associated transformers, substations, and switchboards, incorporation of technology upgrades with a Supervisory Control and Data Acquisition (SCADA) system that will allow college maintenance and operation staff the ability to monitor status of equipment and allow for remote switching. This upgrade will improve resiliency, reliability, and safety for the campus medium voltage distribution system while taking into consideration the electrical load impacts of the new solar energy production, battery storage, EV charging stations, and future building construction.

|                           |           |                             |           |
|---------------------------|-----------|-----------------------------|-----------|
| Start Preliminary Plans   | Dec 2021  | Award Construction Contract | Mar 2026  |
| Start Working Drawings    | Apr 2024  | Complete Construction       | June 2027 |
| Complete Working Drawings | Mar 2025  | Advertise for Equipment     | Oct 2024  |
| DSA Final Approval        | June 2025 | DSA Close-out               | Sep 2027  |



**Budget Narrative:** Budget reflects Board action on 4/27/20, 4/26/21, and 4/29/24. On April 27, 2020, the Board approved \$4,700,000. On April 25, 2021, the Board approved \$6,700,000. On April 29, 2024, the Board approved \$1,500,000.

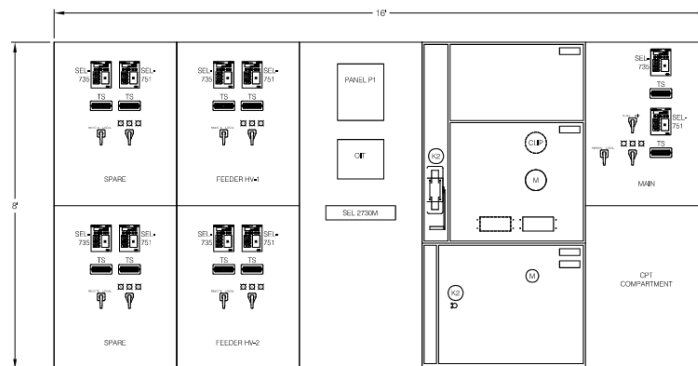
|                              | <u>Original</u> | <u>Revision</u> | <u>Total</u> |
|------------------------------|-----------------|-----------------|--------------|
| Project Budget:              | \$16,802,984    | \$ 0            | \$16,802,984 |
| District Funding Commitment: | \$16,802,984    | \$ 0            | \$16,802,984 |
| Anticipated State Match:     | \$ 0            | \$ 0            | \$ 0         |
| College Contribution:        | \$ 0            | \$ 0            | \$ 0         |
| Basic Aid Allocation:        | \$12,900,000    | \$ 0            | \$12,900,000 |
| Basic Aid Funding Need:      | \$ 3,902,984    | \$ 0            | \$ 3,902,984 |

**Status:** Design Phase.

**In Progress:** 50% Construction Documents are underway.

**Recently Completed:** Bids received for the long lead time Owner Furnished Contractor Installed electrical equipment.

**Focus:** Issue purchase order for equipment, receive and review equipment shop drawings, and review of 50% Construction Documents.



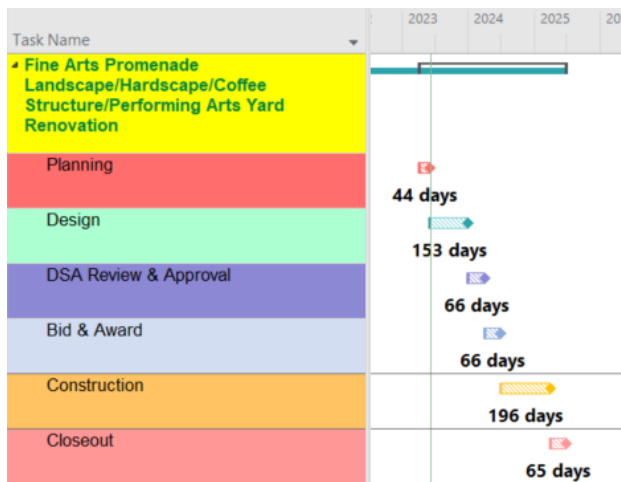
Powerhouse Switchgear Elevation

**IRVINE VALLEY COLLEGE**

**1. ARTS PROMENADE AND COFFEE STRUCTURE**

Project Description: This project will develop the promenade area leading up to the new Arts Village complex. The area will be developed to provide large outdoor working spaces with defined areas for sculpting, drawing, and painting. A 500 square-foot coffee structure integrated into a custom canopy covering will be constructed. The canopy will accommodate up to 50 patrons and invites social interaction, collaborative study, and connection within the Arts Village, Performing Arts Center, and Live Oak Terrace environments. At the Performing Arts Yard, the loading dock area will be reconfigured to provide a workable back of house to support the existing Performing Arts Center and improve walkways and roadways to facilitate the movement, storage, delivery, and loading of larger sets.

|                           |                 |                             |                 |
|---------------------------|-----------------|-----------------------------|-----------------|
| Start Preliminary Plans   | <b>Apr 2023</b> | Award Construction Contract | <b>Nov 2024</b> |
| Start Working Drawings    | <b>Jun 2023</b> | Complete Construction       | <b>Aug 2025</b> |
| Complete Working Drawings | <b>Apr 2024</b> | Advertise for Equipment     | <b>Jan 2025</b> |
| DSA Final Approval        | <b>Aug 2024</b> | DSA Close-out               | <b>Nov 2025</b> |



Budget Narrative: Budget reflects Board action on 4/18/2022 and 4/24/2023. On April 18, 2022, the Board approved \$3,109,903. On April 24, 2023, the Board approved \$7,270,565. In FY 2024-25, the college contributed redevelopment funds of \$3,800,000.

|                              | <u>Original</u> | <u>Revision</u> | <u>Total</u> |
|------------------------------|-----------------|-----------------|--------------|
| Project Budget:              | \$10,380,468    | \$ 3,800,000    | \$14,180,468 |
| District Funding Commitment: | \$10,380,468    | \$ 0            | \$10,380,468 |
| Anticipated State Match:     | \$ 0            | \$ 0            | \$ 0         |
| Anticipated College Funding  | \$ 0            | \$ 3,800,000    | \$ 3,800,000 |
| Basic Aid Allocation:        | \$ 3,109,903    | \$ 7,270,565    | \$10,380,468 |
| Basic Aid Funding Need:      | \$ 7,270,565    | \$ (7,270,565)  | \$ 0         |

Status: Construction Phase.

In Progress: Preparation for mobilization is underway.

Recently Completed: Irvine Ranch Water District and Municipal Water District of Orange County approved the turf removal and irrigation rebate applications. Notice to Proceed issued to contractor.

Focus: Coordinating with stakeholders and preparing for project mobilization. Working with contractor to establish the scope for the first 90 days.

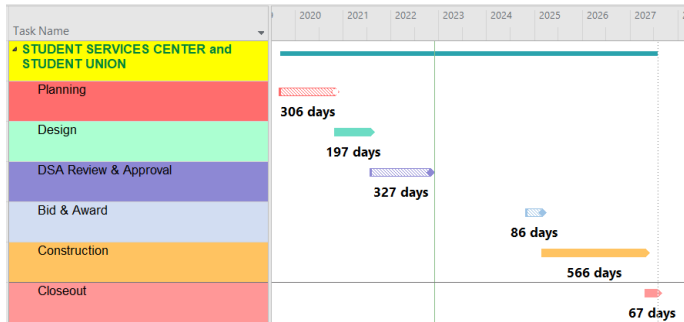


Landscape Rendering

## 2. STUDENT SERVICES CENTER and STUDENT UNION

Project Description: The original project concept was to renovate the existing Student Services Center. During the programming phase, it became apparent that the existing structure is not conducive to renovation thereby requiring replacement given that all of the services would not fit within one building; therefore, this project will replace the 30,558 gross square feet (GSF) Student Services Center and the 13,086 gross GSF B-100 building with two new buildings totaling 73,197 GSF to address programming needs, upgrade the food service area, and provide upgrades to meet ADA requirements. This plan will consolidate all student services into the two buildings with a separate building for food services and student activities. The project will also include a newly redesigned quad and drop off area adjacent to the Student Services Center.

|                           |          |                             |          |
|---------------------------|----------|-----------------------------|----------|
| Start Preliminary Plans   | Sep 2019 | Award Construction Contract | Dec 2024 |
| Start Working Drawings    | Oct 2020 | Complete Construction       | Apr 2027 |
| Complete Working Drawings | Jul 2021 | Advertise for Equipment     | Aug 2026 |
| DSA Final Approval        | Jun 2023 | DSA Close-out               | Jul 2027 |



**Budget Narrative:** Budget reflects Board action on 4/22/2019, 4/27/2020, 9/21/2020, 4/26/2021, 4/18/2022, and 4/29/2024. On April 22, 2019, the Board approved \$23,850,000. On April 27, 2020, the Board approved \$13,202,189 and on September 21, 2020, the Board approved \$1,953,509 resulting in a final allocation of \$15,155,698 for FY 2020-21. On April 26, 2021, the Board approved \$10,000,000. On April 18, 2022, the Board approved \$4,789,319. On April 29, 2024, the Board approved \$18,369,311.

|                              | <u>Original</u> | <u>Revision</u> | <u>Total</u>  |
|------------------------------|-----------------|-----------------|---------------|
| Project Budget:              | \$48,300,000    | \$53,441,364    | \$101,741,364 |
| District Funding Commitment: | \$48,300,000    | \$53,441,364    | \$101,741,364 |
| Anticipated State Match:     | \$ 0            | \$ 0            | \$ 0          |
| Basic Aid Allocation:        | \$23,850,000    | \$48,314,328    | \$ 72,164,328 |
| Basic Aid Funding Need:      | \$24,450,000    | \$ 5,127,036    | \$ 29,577,036 |

**Status** *Construction Phase.*

**In Progress:** *Proceeding with scope review and preparation for issuance of Notice to Proceed (NTP) after Board approval in December.*

**Recently Completed:** *Received construction bids.*

**Focus:** *Issue NTP and begin construction.*



Student Services Center – Northwest Elevation



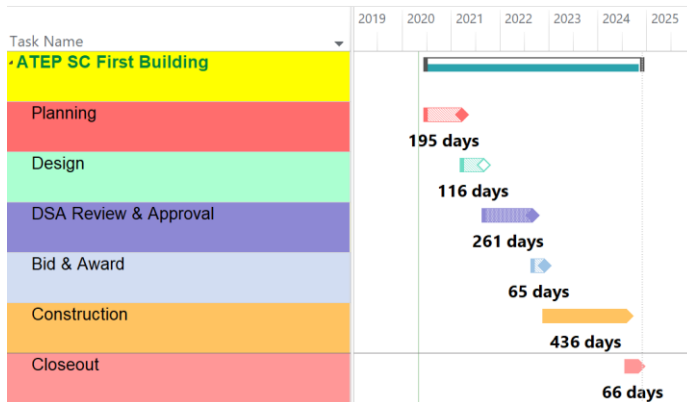
Student Union – Northwest Elevation

## ADVANCED TECHNOLOGY AND EDUCATION PARK (ATEP)

### 1. ATEP – SADDLEBACK COLLEGE @ ATEP

Project Description: This project includes two new buildings for the Culinary and Hospitality programs and Advanced Transportation and Logistics programs totaling 49,844 gross square feet (GSF) for both buildings. The design includes solar photovoltaic panels on the roofs to offset the electrical load of the buildings along with a courtyard between the buildings conducive to outdoor events.

|                           |          |                             |          |
|---------------------------|----------|-----------------------------|----------|
| Start Preliminary Plans   | Jul 2020 | Award Construction Contract | Dec 2022 |
| Start Working Drawings    | May 2021 | Complete Construction       | Apr 2025 |
| Complete Working Drawings | Oct 2021 | Advertise for Equipment     | Apr 2024 |
| DSA Final Approval        | Aug 2022 | DSA Close-out               | Jul 2025 |



Budget Narrative: Budget reflects Board action on 4/27/2020, 4/26/2021, 4/18/2022, 4/24/2023, and 4/29/2024. On April 27, 2020, the Board approved \$4,300,000 from the 2019-20 budget and \$4,787,100 from the 2020-21 budget. On April 26, 2021, the Board approved \$7,083,321. On April 18, 2022, the Board approved \$31,032,352. On April 24, 2023, the Board approved \$25,232,548. On April 29, 2024, the Board approved \$8,162,105.



|                              | <u>Original</u> | <u>Revision</u> | <u>Total</u> |
|------------------------------|-----------------|-----------------|--------------|
| Project Budget:              | \$75,100,000    | \$ 5,497,426    | \$80,597,426 |
| District Funding Commitment: | \$75,100,000    | \$ 5,497,426    | \$80,597,426 |
| Anticipated State Match:     | \$ 0            | \$ 0            | \$ 0         |
| Basic Aid Allocation:        | \$ 4,300,000    | \$ 76,297,426   | \$80,597,426 |
| Basic Aid Funding Need:      | \$70,800,000    | \$(70,800,000)  | \$ 0         |

Status: Construction Phase: 73 percent complete.

In Progress: Mechanical, electrical, and plumbing rough-in is ongoing throughout the building. Installation of automotive exhaust system, photovoltaic panels, and exterior metal panels is underway. Startup of rooftop HVAC unit, interior painting, tiling, and preparing for kitchen equipment is in progress.

Recently Completed: Planted site trees, installed glass wall systems, and kitchen wall tile. Connected to permanent power with Southern California Edison.

Focus: Installation of AV/IT equipment, interior finishes, glazing installation, casework, and completion of the roof.



*Auto Exterior – West Elevation*

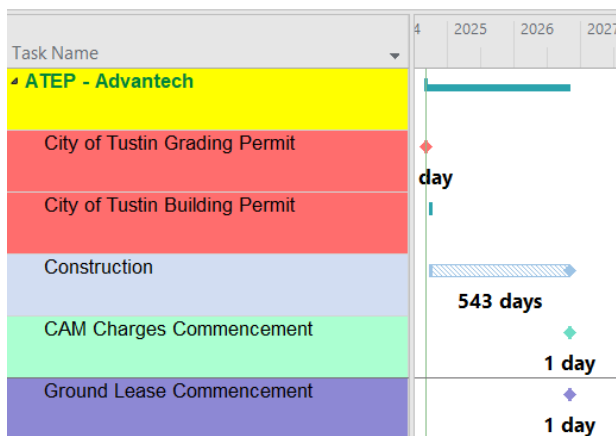


Culinary Roof – West Elevation

## 2. ATEP – Advantech

**Project Description:** The Project consists of construction and operation of two new buildings on the approximately 10-acre site at ATEP. Building 1 includes a 6-story, 108,942 square foot headquarters office building, a 2<sup>nd</sup> floor reserved for educational partnering uses, and floors 3-6 for research and design. Building 2 includes a 2-story, 78,837 square foot warehouse facility that would be used for storage, light manufacturing, repairing, and packaging of non-hazardous industrial computer related products. The project also includes parking for 377 vehicles, which includes 38 EV charging station spaces.

|                                |                 |  |          |
|--------------------------------|-----------------|--|----------|
| City of Tustin Grading Permit  | <b>Sep 2024</b> | Construction Completion/<br>Primary Rent<br>Commencement | Nov 2026 |
| City of Tustin Building Permit | <b>Nov 2024</b> |  |          |
| Construction Commencement      | <b>Nov 2024</b> |  |          |
| Complete Construction          | Oct 2026        |  |          |
| CAM Charges Commencement       | Nov 2026        |  |          |



**Status:** Construction Phase.

In Progress: Grading operation is *ongoing*. Installation of storm drain catch basins is underway.

Recently Completed: Received *building* permit from the City of Tustin.

Focus: *Pour retaining wall footings. Set concrete blocks on the south and east side of the project.*



Advantech Campus – West Elevation

## GENERAL NOTES

- Project updates for active construction projects may be viewed on the District [website](#)
- Schedule Table: Bold dates in the schedule table indicate actuals. Items that are not bold indicate anticipated dates. Items in italics have changed since the last update.
- Budget Table:
  - The Project Budget comes from the Facilities Master Plan. The projects will be funded gradually based upon the cash flow needs in accordance with the timelines established in the Facilities Master Plan.
  - When state matches are identified, the project budgets reflect the allocated state match as reported in FUSION for the latest planning year. (FUSION is the State Chancellor's Office database for Capital Outlay.)
  - The "Revisions" column for the State Match category includes changes due to escalation and changes that may have occurred to the state's percentage (i.e. going from an 80% match down to a 50% match) as the economy has changed from the original project approvals to current date. The "Revisions" column for the Basic Aid Allocation will show a total variation to date taking into account both increased and decreased basic aid allocations.
  - When the "Basic Aid Allocation" amount is less than the "District Funding Commitment" amount, additional basic aid allocations are needed in future years to fully fund the project. This amount is identified on the "Basic Aid Funding Need" line.
- The Budget Narrative paragraph for each project discusses the history of change to all category amounts over the life of the project.